



## **Stainless steel / aluminium sub-construction for RSC**

The effective system for preventing thermal bridging in ventilated rainscreen cladding facades

# Real strength: the right combination of supports

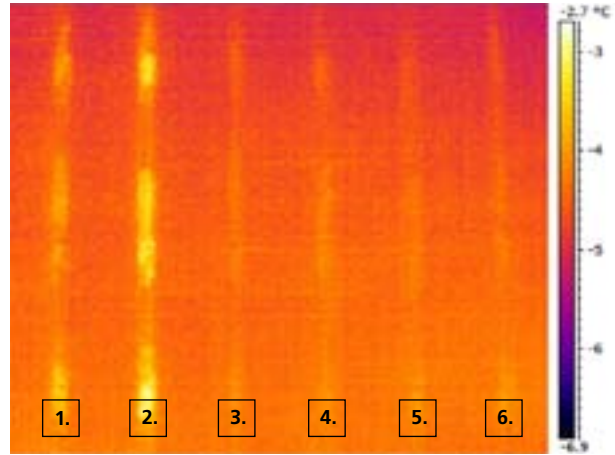
The new stainless steel / aluminium sub-construction

Welcome to a more economic future. With the successful material combination of stainless steel and aluminium in our new facade sub-construction, it is possible to effectively reduce thermal bridges as well as installation time.

New environmental conditions, new building control requirements, new design demands: the trend-setting stainless steel / aluminium sub-construction for ventilated rainscreen cladding facades now offers more options to meet these requirements.

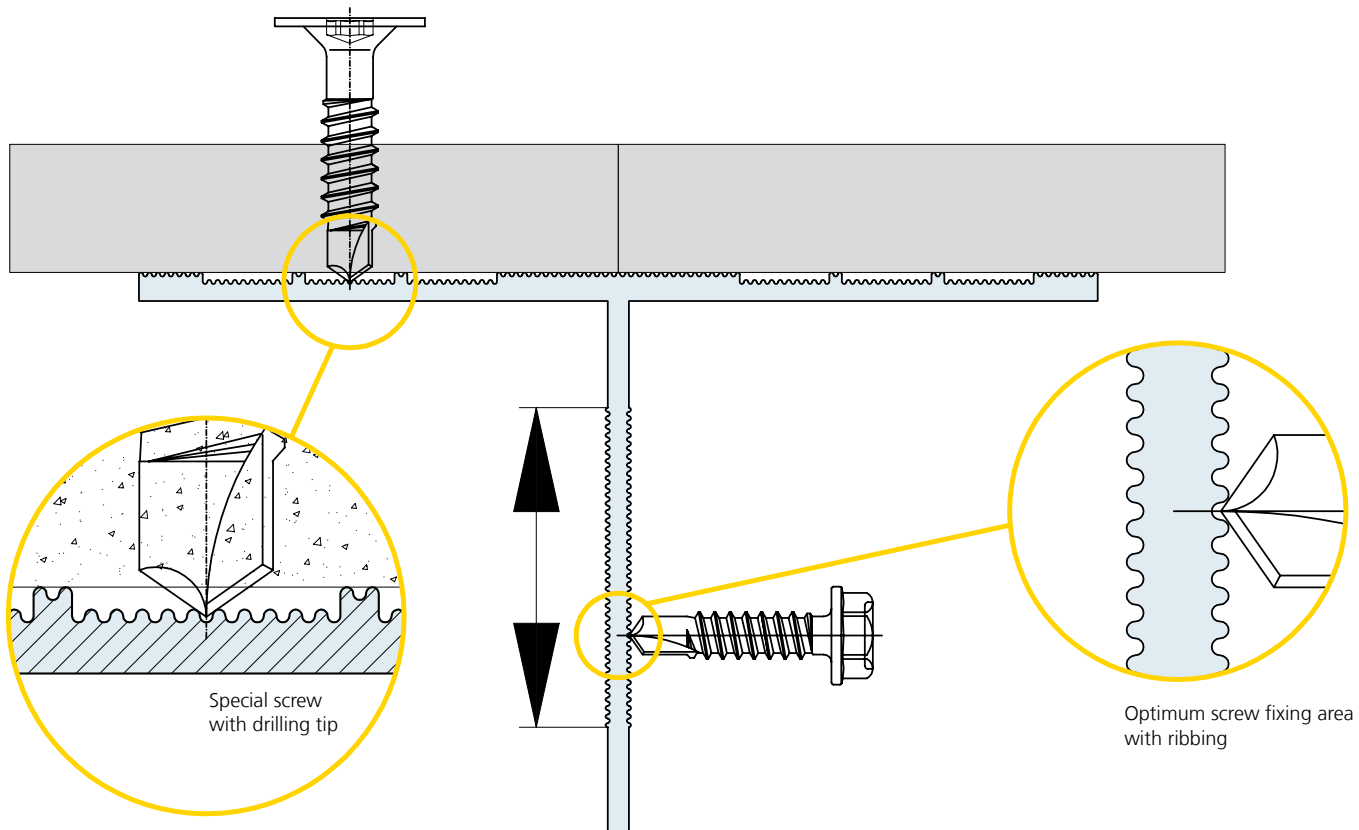
## Advantages: wall brackets and carrier profiles

- Extremely low thermal conduction and significantly reduced thermal bridging through the stainless steel wall brackets
- Very high load-bearing capacity - hence, also ideally suited for natural stone facades
- Wall brackets with a wide range of projections, providing greater flexibility and more adjustment options.
- Reduced contact surface of the carrier board on the carrier profiles thanks to integrated grooves (thermal / hygric separation)
- Additional ribbed screw fixing areas for faster and more accurate screw fixing



**Comparison of thermal characteristics of vertical construction support systems**  
The higher the temperature, the higher the heat loss through the wall.

1. Conventional sub-construction: aluminium wall bracket with thermal stop and thermal isolating strip on the T-profile
2. Aluminium wall bracket without thermal stop and thermal isolating strip on the T-profile
3. Stainless steel wall bracket with thermal stop but without thermal isolating strip on the T-profile
4. Stainless steel wall bracket without thermal stop but with thermal isolating strip on the T-profile
5. Stainless steel wall bracket with thermal stop and thermal isolating strip on the T-profile
6. Stainless steel wall bracket without thermal stop and thermal isolating strip on the T-profile



StoVentec facade systems (carrier boards are screwed directly onto the T-profile)

# The elements of the stainless steel / aluminium sub-construction:

## Explained in detail



### Sto-Stainless Steel Wall Bracket GP small

- For producing floating points
- Standard: in projections 100 - 250 mm (30 mm increments)
- Special solution: in projections 100 - 500 mm (10 mm increments)
- Height: 90 mm
- For anchoring with dowels in solid substrates: 1 oblong hole (11 x 15 mm), for anchoring with screws in timber or steel substrates: 2 round holes (Ø 7 mm), 2 oblong holes (7 x 12 mm)
- For connection with T-profile: 2 oblong holes (5.5 x 20 mm)
- Integrated retaining spring



### Sto-Stainless Steel Wall Bracket FP/GP large

- For producing fixed and floating points
- Standard: in projections 100 - 250 mm (30 mm increments)
- Special solution: in projections 100 - 500 mm (10 mm increments)
- Height: 130 mm
- For anchoring with dowels in solid substrates: 3 oblong holes (11 x 15 mm), for anchoring with screws in timber or steel substrates: 2 round holes (Ø 7 mm), 2 oblong holes (7 x 12 mm)
- For connection with T-profile: 3 round holes (Ø 5.5 mm) and 2 oblong holes (5.5 x 20 mm)
- Integrated retaining spring



### Sto-Aluminium T-Profile

- Dimensions: 90 x 52.7 x 2.7 mm
- Length of profile: 3 or 6 m
- Contact surface of the carrier board has grooves for thermal and hygric separation
- Ribbed screw fixing areas



### Sto-Aluminium L-Profile

- Dimensions: 50 x 40 x 2.7 mm
- Length of profile: 3 m
- Contact surface of the carrier board has grooves for thermal and hygric separation
- Ribbed screw fixing areas



#### Sto-Agraffe Profile

- Length of profile: 3 or 6 m
- With optimised geometry



#### Sto-Board Agraffe Profile

- Length of profile: 6 m
- With optimised geometry
- With adjustment screw for height adjustment (if necessary)



#### Sto-Board Agraffe Profile fitted into the Sto-Agraffe Profile

- With very precise fitting

## Application

The stainless steel / aluminium sub-construction is easy to install on all load-bearing substrates and provides optimum compensation for unevenness. It is ideally suited for StoVentec facade systems (carrier boards are screwed directly to the T-profile) and for StoVerotec facade systems (suspension panel systems) and, in addition, is perfectly suitable for all other ventilated rainscreen cladding facade systems. The options are limitless - from glass, natural stone and photovoltaic panels through render coatings to glass mosaic, natural stone and ceramic claddings.

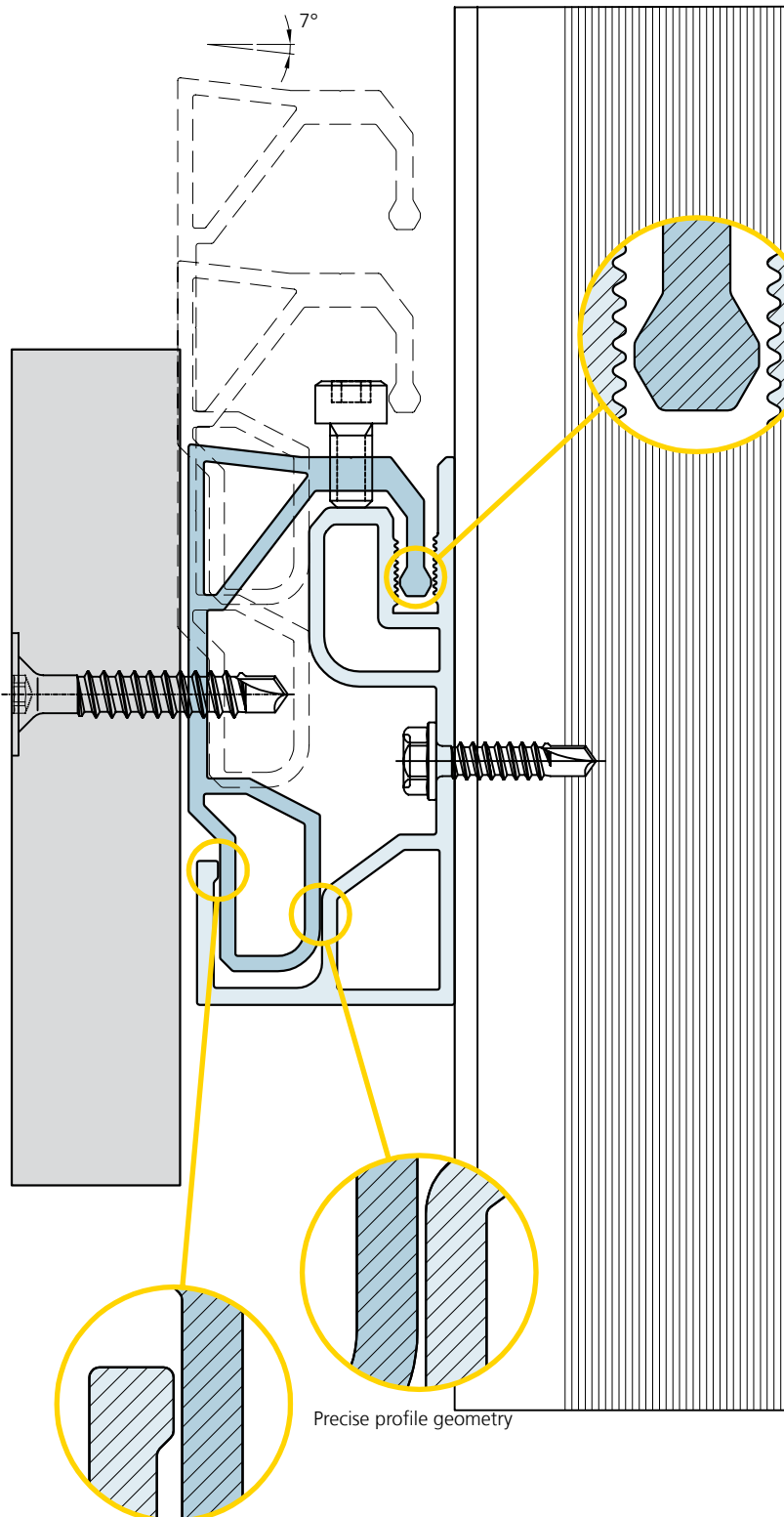
#### Our service

- Free-of-charge project-related estimate of quantities
- Project-related structural calculations\*
- Project-related calculation of wind load\*
- Project-related process and installation planning\*

\*subject to costs

# Added value: the harmonious interplay of all individual parts

## Advantages of this trend-setting complete solution



Optimised mounting

### Benefits:

#### Agraffe profile and board carrier profile

- High resistance to torsional stiffness, even large elements are easy to mount
- Optimised profile geometry to make preparation and mounting extremely easy
- Controlled water flow thanks to the slightly inclined top of the profiles
- Reliable adjustment option through material reinforcement in the area of the adjustment bolt

### The main advantages of this new sub-construction

- Substantially reduced thermal conductivity
- Optimised and easy installation
- Maximum functional precision
- Suitable for all types of facades
- Complete solution from one supplier (sub-construction and cladding)

The new stainless steel / aluminium sub-construction is a solution that has been optimised in economical as well as building physical terms. It allows larger axis spacing and reduces the number of wall brackets required.

### StoVerotec facade system (suspended panel system)

## Subsidiaries abroad

Austria  
**Sto Ges.m.b.H.**  
 9500 Villach  
 Phone +43 4242 33133-0  
[www.sto.at](http://www.sto.at)

Belgium  
**Sto nv/sa**  
 1730 Asse  
 Phone +32 2 4530110  
[www.sto.be](http://www.sto.be)

China  
**Shanghai Sto Ltd.**  
 201201 Shanghai  
 Phone +86 2158 972295  
[www.sto.com.cn](http://www.sto.com.cn)

Czech Republic  
**Sto s.r.o.**  
 25170 Dobřejovice  
 Phone +420 225 996 311  
[www.sto.cz](http://www.sto.cz)

Denmark  
**Sto Danmark A/S**  
 2650 Hvidovre  
 Phone +45 702 70143  
[www.stodanmark.dk](http://www.stodanmark.dk)

Finland  
**Sto Finexter Oy**  
 01730 Vantaa  
 Phone +358 207 659191  
[www.stofi.fi](http://www.stofi.fi)

France  
**Sto S.A.S.**  
 95870 Bezons  
 Phone +33 1 34345700  
[www.sto.fr](http://www.sto.fr)

Germany  
**HEMM STONE GmbH**  
 97268 Kirchheim  
 Phone +49 09366 82-0  
[www.hemmstone.de](http://www.hemmstone.de)

Hungary  
**Sto Építőanyag Kft.**  
 2330 Dunaharaszti  
 Phone +36 24 510210  
[www.sto.hu](http://www.sto.hu)

Ireland  
**Sto Ltd.**  
 Dublin 12  
 Phone +353 1460 2305  
[www.sto.ie](http://www.sto.ie)

Italy  
**Sto Italia srl**  
 50053 Empoli (FI)  
 Phone +39 0571 94701  
[www.stoitalia.it](http://www.stoitalia.it)

Malaysia  
**Sto SEA Sdn. Bhd.**  
 Baru Sri Alam  
 81750 Masai  
 Phone +607 388 1737  
[www.sto-sea.com](http://www.sto-sea.com)

Netherlands  
**Sto Isoned bv**  
 4004 LH Tiel  
 Phone +31 344 620666  
[www.sto.nl](http://www.sto.nl)

Norway  
**Sto Norge AS**  
 1412 Sofiemyr  
 Phone +47 6681 3500  
[www.stonorge.no](http://www.stonorge.no)

Poland  
**Sto - ispo Sp. z o.o.**  
 03-872 Warszawa  
 Phone +48 22 5116-102  
[www.sto.pl](http://www.sto.pl)

Russia  
**OOO Sto**  
 119180 Moskva  
 Phone +7495 974 1584

Singapore  
**Sto SEA Pte Ltd**  
 Singapore 575625  
 Phone +65 64 533080  
[www.sto-sea.com](http://www.sto-sea.com)

Slovak Republic  
**Sto s.r.o. organizačná zložka**  
 83104 Bratislava  
 Phone +42 2 44648142

Slovenia  
**Sto Ges.m.b.H.**  
**Podružnica Ljubljana**  
 1000 Ljubljana  
 Phone +386 1 4303 525  
[www.sto.com/si](http://www.sto.com/si)

Spain  
**Sto Ibérica S.L.**  
 08302 Mataró (Barcelona)  
 Phone +34 93 7415972/3  
[www.sto.es](http://www.sto.es)

Sweden  
**Sto Scandinavia AB**  
 581 10 Linköping  
 Phone +46 13 377100  
[www.sto.se](http://www.sto.se)

Switzerland  
**Sto AG**  
 8172 Niederglatt/ZH  
 Phone +41 44 8515353  
[www.stoag.ch](http://www.stoag.ch)

United Kingdom  
**Sto Ltd.**  
 Glasgow G52 4TG  
 Phone +44 141 404 9000  
[www.sto.co.uk](http://www.sto.co.uk)

USA  
**Sto Corp.**  
 Atlanta, GA 30331  
 Phone +1 404 3463666  
[www.stocorp.com](http://www.stocorp.com)

## Head office

### Sto AG

#### Export department

Ehrenbachstrasse 1  
 79780 Stuehlingen  
 Germany  
 Phone +49 7744 57-1131  
 Fax +49 7744 57-2428  
[infoservice@sto.eu.com](mailto:infoservice@sto.eu.com)  
[www.sto.com/international](http://www.sto.com/international)



## Subsidiary Germany

### StoVerotec GmbH

Hanns-Martin-Schleyer-Straße 1  
 89415 Lauingen/Donau  
 Phone +49 9072 990-126  
 Fax +49 9072 990-160  
[infoservice.stoverotec@sto.eu.com](mailto:infoservice.stoverotec@sto.eu.com)  
[www.stoverotec.de](http://www.stoverotec.de)

## Technical Info Center

Information can be obtained by calling:  
 Phone +49 9072 990-0

Information on international distribution partners can be obtained by calling us on:  
 Phone +49 7744 57-1131